



beer moos

Spring 2013

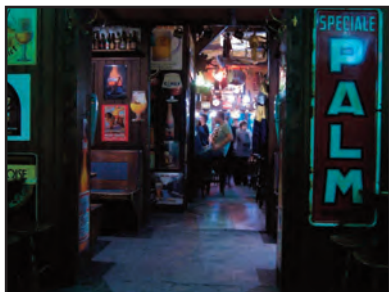
Issue Twenty Six

TO BELGIUM WITH CAMRA

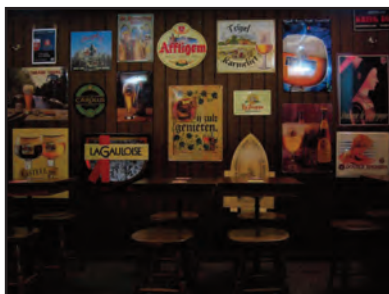


Why not join us in April as we travel to Europe's other great ale-brewing country? We shall visit De Dolle brewery and Kerkom brewery, and have a whole day free to explore as well. We stay in Leuven and in Hasselt.

We don't just go for beer though of course that's the main pull for many. On previous trips we have visited the major WW1 cemeteries and heard the Last Post sounded at the Menin Gate in Ypres. We've been to a Belgian chocolate factory and sampled its products, we've ridden the tram that runs the entire length of Belgium's coast. We've stayed in Ostend, Mechelen and Antwerp, and explored the mediaeval splendours of Bruges and Ghent. And of course we have been to several breweries and many splendid bars. What is there not to like?



This year's trip is from Thursday April 11th to Sunday April 14th. We go from Milton Keynes by private coach through the Tunnel all the way, and the coach stays with us to transport us around. Cost is £260 (single supp £68) and since the trip was planned the Euro has risen to 87p making this a bargain for what you get.



So – come with us! There are places still. Tell your friends and family, spread it round your local! To book, contact Doug Dillow, our Social Secretary, by email at social@mkcamra.org.uk or phone him on 01604 862187 or 07738 598128.

*To Belgium
with CAMRA*

*Hops and
Springs*

Pub News

*Desert Island
Beers*

*Chris
Scoggins*

*Fastest
Blubber on
Rubber?*

*Traveller's
Ales*

Diary Dates

FEATURED IN THIS ISSUE



The Watts Arms

Castlethorpe Road, Hanslope, MK19 7LG

**Buckinghamshire
Camra Pub of The Year 2012**

Good Beer Guide 2013

**Beer Festival
25th - 28th April**

01908 510246
www.thewattsarms.co.uk

**The Lamb
Stoke Goldington
Telephone 01908 551233**



Steve, Rachel & all our staff welcome you to our
traditional style village free house

High Standard - not bog standard real ales,
many from micro breweries to tempt your
taste buds.

Lagers, Stout, Westons Scrumpy Cider
plus a good range of Red, White & Rose
Wines.

Honest homecooked food at realistic prices.

Continually changing Specials Board.

Freshly prepared Meat, Poultry, Fish &
Vegetarian dishes & our highly popular
scrumptious Sunday lunches

A Real Pub for Real People.

Food served from 12.00 - 2.30 & 5.00 - 9.00 Monday - Friday,
All day Saturday, Sunday 12.00 - 5.00, Booking High Recommended

Email thelambpub@tiscali.co.uk
or visit our website at www.thelambstokegoldington.moonfruit.com

Nags Head

16th century thatched village pub

Voted MK Citizen Pub of The Year 2009

Good real ale selection • Cask Marque accredited

Food served all day everyday

Traditional Sunday roasts

Christmas bookings being taken

Quiz Night - 1st Sunday of each month at 8pm

Sky Sports and ESPN

Quiz night every Sunday at 8pm

Seating Area to rear of Pub



30 High Street, Great Linford, Milton
Keynes MK14 5AX Tel: 01908 607449

The Lowndes Arms

Country Pub, Restaurant and Motel

The Lowndes Arms is a 17th Century Country Pub and Restaurant
with en-suite accommodation, located in the historic village of
Whaddon in North Buckinghamshire. We have a large Garden and
Car Park with fabulous views across Whaddon Chase and access to
the North Buck's Way is only a short walk.

Food Available

Monday to Friday

12.00pm to 2.30 pm and

5.00pm to 9.00pm

Saturday - 12.00pm to 9.00 pm

Sunday - 12.00pm to 6.00pm

(Food orders are taken until

8.00pm for Special Events)



Tuesday is "Steak Night". Come and enjoy our superb 28 day aged
steaks at discounted prices. Special deals are also available on Wine.
Tuesday night is not to be missed!

O.A.P.'s Special Menu only £6.50 for a Main Meal and a Dessert.
Please ask for details.

A Take-Away Food Service is also available. Please ask for details.

4 High Street, Whaddon, Milton Keynes, Buckinghamshire
MK17 0NA TEL: 01908 501706

HOPS and SPRINGS

You know Spring is coming when bulbs start to flower, days get longer, and human trops come out of hibernation and begin planning their social lives for the year ahead.



We are now, thankfully, past January with its dreary self-improvement resolutions, and can get on with the fun part of the year.

Since I joined CAMRA a large part of the fun in my year has revolved round branch and nationwide CAMRA activities. The local branch is kept going by a small (in number if not always in physique...!!) set of volunteer activists who not only have fun, but work hard to bring it to others with such things as trips to local breweries, meals out, our fabulous Concrete Pint beer festival. They also serve in more formal roles on the branch committee, and in other posts you might not have thought of.

These include Brewery Liaison Officer (who works with local breweries), Barrel Sponsorship person (he or she organises sponsorship of the local beer festival cask by cask), Pubs Officer (who deals with beer scoring and Good Beer Guide entries and tries to keep an eye on some 200 pubs in our area), cellar-persons (who are trained how to look after the beer at our Beer Festival), and of course the editor of this publication!

I could go on. All of these volunteers would love to pass on their knowledge and skills and increase the number of people who are actively campaigning for Real Ale and pubs issues within this area. This all sounds very worthy and, hopefully, interesting, but the secret I haven't told you is that these people are an eclectic bunch who come from all walks of life and have a terrific sense of humour, and though they've mostly been fellas so far, we women are getting in on the act too!

So, if you've been a hibernating little bulb all winter, why not come along to one of our socials or meetings and see what you could flower into?

Lyn Norman

NEXT ISSUE

The next issue of Beer Moos will be published on: June 1st. We must have your stories, news and advertisements by: May 20th. Late copy cannot be guaranteed entry.

Committee Branch Contacts

(NB Some of these may change following the branch Annual General Meeting on March 25th)

Chairman: Phil Swinbank - 07733 383413
chairman@mkcamra.org.uk

Vice-Chairman: Jim Scott - 07952 337526

Branch Secretary: Janet Russell
secretary@mkcamra.org.uk

Branch Contact: Phil Swinbank - 07733 383413
contact@mkcamra.org.uk

Treasurer: Doug Dillow
treasurer@mkcamra.org.uk

Membership Secretary: Phil Rooke
membership@mkcamra.org.uk

Branch Cider Coordinator: Anne Clark
cider@mkcamra.org.uk

Social Secretary: Doug Dillow
social@mkcamra.org.uk

Newsletter Editor: Jim Scott - 07952 337526
editor@mkcamra.org.uk

Branch Young Persons Coordinator: Ali Pringle
ypc@mkcamra.org.uk

PR Officers: Jan Taylor and Kim Walton
pr@mkcamra.org.uk

Pubs Officer: Alan Carter
pubs@mkcamra.org.uk

Webmaster: Jason Jarratt
webmaster@mkcamra.org.uk

Beer Festival Organiser: Doug Dillow
festival@mkcamra.org.uk

Trading Standards

If you have a complaint about any unfair trading practice, such as short measure or misleading product promotion, contact Milton Keynes Trading Standards at PO BOX 105, Civic Offices, 1 Saxon Gate East, Milton Keynes MK9 3HH Telephone 01908 252433.

Email: tsd@milton-keynes.gov.uk or Buckingham Trading Standards at 5-7 Walton Street, Aylesbury, Bucks HP20 1UP, Tel: 08454 040506
Local Bus information & timetables are available at www.arrivabus.co.uk.

To Advertise

To place an advert or enquire about our rate card please contact: Neil Richards - 01536 358670



Copyright CAMRA Milton Keynes and North Bucks 2013. All rights reserved. Beer Moos is published by the Milton Keynes Branch of the Campaign for Real Ale. The views expressed are not necessarily those of CAMRA Ltd or its Branches

Pub News

Note to Licensees. If you have news from your pub that you'd like to go in the next Pub News, please send details to the editor by May 25th. Tell us what you've got planned for the summer and report on events that happened earlier. Remember - if you don't tell us about it, we can't print it.

To place a paid advertisement in Beer Moos, contact Neil Richards on 01536 358670 or email him at n.richards@btinternet.com. Readers, PLEASE support our advertisers and patronise their businesses, for without them there would be no Beer Moos for you to enjoy.

News North

Globe, Hanslope Our spy reports that this one-time Good Beer Guide fixture is displaying a 'To Let' sign. In fact, when our spy drove past in early February it sported two - a Marston's 'To Let' sign but also one from Fleurets (an estate agent specialising in pubs) saying the freehold was for sale. Reports and clarification please!

Watts Arms, Hanslope is marking Community Pubs Month with a beer festival on 25th-28th April and a quiz night to kick the festival off.

News East

Robin Hood, Clifton Reynes is revving up for the "4th Bikes n Rods n Rock n Roll event" organised by Cernunnos MCC. The event promises 'bikes, trikes, scooters, hot-rods, Yanks, and customs' plus suitable sounds from the Kustom Kings Rock 'n Roll band, so get yer leathers on and vroom along 'coz everybody's welcome! Start time is 11am, admission £2 (children under 16 free). Details at www.therobinhoodpub.co.uk (tel: 01234 711574)

News West

Bell, Beachampton reopened on 17th November with Matthew Henman as chef and general manager. Matt, who has been eight years in the licensed trade, has overseen the complete refurbishment of this village free-house, and serves ales from the Greene King stable plus a full range of wines and spirits, as well as freshly-prepared food cooked by Matt himself. Beer Moos welcomes Matt to our branch area and wishes both him and the Bell a successful future.

New Inn, Buckingham Beer Moos welcomes new licensee David Whiting and partner Anna Rees to our branch area. The New Inn has been impressively refurbished and redecorated, and when our spies looked in the ale - from the Greene King range - was excellent, so we have high hopes for this characterful town-centre boozer, and wish Anna and David a prosperous tenure there.



New Inn, Buckingham - David and Anna

Woolpack, Buckingham has poker on Tuesday nights, quiz on Wednesday nights, and acoustic music on Thursday nights. Details on their website: www.buckinghamwoolpack.co.uk

News South

George, Winslow There's Somerset Pig Racing at the George on March 23rd - reportedly by popular demand! Beer Moos is unsure exactly what pig racing involves (especially when we hear you have to buy your pig at the bar!) but it sounds fun, and as good an excuse as any to get your snout into some ale. Call 01296 709290 to discover more.

News Central

Cuba, New Bradwell was boarded up on two occasions when our informant passed by in early February. The pub had also been deleted from the list of Charles Wells pubs on that brewery's website. As we go to press we have no further information on its possible future.

Foundry Arms, Fenny Stratford. Beer Moos extends a warm welcome to new licensees Peter and Lis May at this corner local, with pool table, juke box, and TV, featuring live football. On the first Saturday evening of the month a DJ plays vinyl records from the '60s, '70s and '80s. On the 8th March, there is a charity horse race night. Opening hours 12 - 11pm, Mon-Sat, and 12- 10.30pm on Sundays.

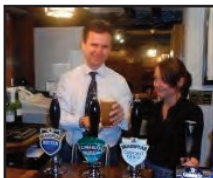
Ales come from the Wells and Young's stable. It is some years since the previous tenant sold real ale, so we are delighted to discover that the Foundry is selling it now.

Queen Victoria, Wolverton reopened on December 1st 2012. Wells and Youngs ale was on sale when our spy looked in. This pub has had a chequered history so Beer Moos wishes it well.

Wetherspoons, 201 Midsummer Boulevard is marking Community Pubs Month with a beer festival to run throughout April.

The Bar of the House?

Milton Keynes North MP Mark Lancaster was recently put to work in the newly refurbished Malting House (formerly the White Hart) in Stoke Goldington - as a barman!



Mark is a great supporter of pubs, and encourages everyone to support their local. He may even be the one behind the bar serving you as he continues his tour of local pubs.

CLUB NEWS

Wolverton Town Sports Club is running its 6th Real Ale and Cider Tasting Weekend on Friday 22nd March 7-11pm, Saturday 23rd March 12pm – 11pm, and Sunday 24th March 12pm – 10.30pm. You can find the club at Osborne St Wolverton MK12 5HH (tel 01908 313866). Many real ales and ciders will be available, and there's live music on Saturday evening and hot and cold snacks all weekend.

BREWERY NEWS

Concrete Cow has produced a small quantity of *Sacred Cow* malt spirit distilled from its beers. This can be obtained from the brewery but as we go to press we don't know the bottle size or price. By law it can't be called whisky till it has been matured in cask for at least 3 years.

The brewery's new beer, also called *Sacred Cow*, has already sold out in 2 pubs including Wetherspoons in Leighton Buzzard. It was also sale in festivals at the Cock and Bull and at Luton in February.

Frog Island. This Northampton brewery is closing down under its current owners and is up for sale. It's hoped that brewing will carry on with new owners using the same premises, brewery name and recipes, but as we go to press we have no definite news of its future.

CIDER NEWS

Great news for all cider and perry lovers! Laurence Conisbee of Virtual Orchard has 200 perry pear trees

on order, which will be planted early this year and are expected to bear fruit in 3 years time. Last year Laurence was able to harvest enough apples to make 80,000 litres of cider, both his award-winning Hard Core and a new cider in the West Country style.

Though 2012 was a poor year for apples, Laurence sources his from orchards that have their own beehives, which has helped give a decent crop. He's also planning to produce mead, which should be ready later in the year, and a small amount of apple brandy, miniature bottles of which will be available soon.

Introducing CAMRA'S New Press Manager

CAMRA's head office at St Albans now has a new Press Manager. Neil Walker has taken over from Jon Howard who has now left the company.

Neil writes 'As a CAMRA member for many years and a beer lover for many before that, I'm very much looking forward to helping to promote the joys of Real Ale and Pubs in the UK. I look forward to working with you all.'

Neil deals with all press enquiries and can be contacted at neil.walker@camra.org.uk and 01727 798443.

The Red Lion

Lock View Lane, Bletchley
Milton Keynes
01908-372317

**Milton Keynes
CAMRA Branch
Pub of the Year 2010**

Canalside Location

Family Pub All Welcome

3 Real Ales and 1 Real
Scrumpy Available

Desert Island Beers



by Carl Dillow

Welcome to the third instalment of Desert Island beers. In this edition we ask the opinion of Carl Dillow. Carl has been a major part of the beer festival over the last 12 years, being on the committee for 6 of them, organising 3 of them, and latterly acting in the capacity of head cellar man, and ordering all of the beer for the Concrete Pint 2012.

I am a self-confessed hop monster. Most beers are on my list because the brewers have put the hops in the beer and not just in the tasting notes. I don't recommend this list as an evening's plans for drinking, not just on account of the ABVs, but because the intensity of flavour in some beers here means they are best experienced on their own. I have listed them in ABV order.

I am struggling to pick just one from Brodie's Brewery. They make such fabulously hoppy beers. Their tap "King William IV" in Leyton is very close to my idea of heaven, with at least 50% of their 20 pumps being Brodie's, and all at £2.35 a pint! One that stands out does so because it's unusual to get masses of flavour in a low ABV beer. This is **Brodie's Citra (3.1%)**, but if it isn't available, just stick another Brodie's in the dinghy, I won't grumble.

My second choice is **Concrete Cow Black Monk (3.6%)**. Unusual to find a mild on a hop monster's select few, but this is an exceptional mild. I don't drink a lot of dark beer but whenever Dan brews this (usually around May) I always try and seek it out. I was talked into a pint at one of our 'Mild month of May' socials, and I stuck on it all night.

My next is here for sentimental reasons as it was my first ever brewery trip, possibly my first ever pint of real ale (having been brought up by a lager drinker, who I have since converted) and the only beer out of 15 I was able to correctly identify in a blind tasting session. It is **Black Sheep Ale (4.4%)**. A very drinkable all-rounder, which I have to thank for giving me the real ale taste when I was younger.

A multi-award winner from another local brewer is next, **Great Oakley Gobble (4.5%)**. This is a great 'easy-drinking' hoppy beer as enjoyable to drink as it is to order. I also know it was high on the list of favourites of my late friend Chris Scoggins, whose

knowledge of beer was unquestionable and I have enjoyed many a pint of Gobble with him.

Fifth on my list sees **Millstone True Grit (5%)** which has an almost identical little brother called Tiger Rut, an anagram of True Grit, at only 4%. True Grit was at our beer festival a couple of years ago when we had a tribute to Manchester beers, and Tiger Rut I had in the Stalybridge Buffet Bar, which is a fantastic little pub on the platform of the Stalybridge train station at one end of the Trans Pennine Real Ale Trail. They are both incredibly refreshing, but I think True Grit has the edge.

Sixth goes to all of the beers of Oakham Ales. Oakham, like Brodie's, are another brewery who make me smile whenever I see their pump clips on in my local. To select just one from their awesome list is a shame so I will select one of their specials, which I happen to know is planned to be brewed again in 2013. This is **Oakham Tranquillity (6.5%)**.

I feel I need to include at least one Belgian. This beer always puts a smile on my face, and often smiles on all around me. It is great in a bottle, even better on draught, but the best I have found it is in the bar at its brewery, where we visited on one of our annual Belgium trips. The first time I tried it on draught was in the Botteltje in Ostend on my stag 'do.' By the end of a particularly heavy night one of my good friends, Dave, was unable to pronounce a number of words clearly and yet could still eloquently announce this beer whenever the suggestion of another round was brought up. It is, of course, **Boosteels Tripel Karmeliet (8%)**.

My last choice goes to another special edition beer, though **Gales Prize Old Ale (9%)** has a massive history. At Horndean (Gales' original home) this beer was matured for a long time in oak vats allowing wild yeast (*Brettanomyces* or simply 'Brett') to ferment more of the sugars and drastically change the flavour of the beer into a tart special ale. Fuller's, who now own Gales, merge the original Horndean brew with every new brew to ensure there is a little bit of that old process carried forward into every bottle. I am so very glad that Fuller's continue to make this beer, and it is still very excellent.

And that concludes my choice of beers to take to my desert island.

Chris Scoggins

29.12.1958 to 23.01.2013

Members of Milton Keynes and North Bucks CAMRA branch were devastated to learn of the sudden death of Chris Scoggins on January 23rd at the young age of 54.



Chris was one of our most respected members. He was a former chairman of the branch, a tireless activist, and head cellarman at many of our Concrete Pint beer festivals. He also was a talented cricketer and musician and his band 'Enquire Within' provided the

entertainment at several Concrete Pints with Chris himself on vocals and lead guitar. On some festival nights he played solo as his alter-ego Doctor Beer, and few will forget Chris in his white lab-coat, with mallet poking out of the pocket, thrashing out has favourite rock standards. Truly a man of many talents!

Home brewing was another great passion with Chris. No mere recipe-follower, his inventive output was always worth trying whichever style he brewed. Such was his skill that he was able to provide the newly-established Concrete Cow brewery with very useful advice and even a recipe for one of their ales. He remained CAMRA's official Brewery Liaison Officer to the brewery in the following years.

Chris and his wife Karen were generous hosts, and many of us will have happy memories of feasts and barbecues in their house and garden. There was always one – maybe even two – firkins of ale in the garage to lubricate proceedings and help down the excellent food. At his home he conducted the beer-tasting courses on which many of us learned how to tell our diacetyls from our esters when scoring beers for flavour.

Chris cut a substantial figure whose presence made itself felt and heard – you always knew when he was in the room! Rumbunctious and feisty in argument he was strong in his opinions and not slow to express them – and his opinions on beer were usually correct, for his knowledge of beer and brewing was encyclopaedic. We used to grin and groan in equal measure at CAMRA meetings when Any Other Business came up, as you could be sure Chris would have plenty! Many was the time when, if we wandered off course at a meeting, Chris smartly knocked us back on to it. But one thing did come before beer and that was his beloved MK Dons and we knew never to expect Chris at any meeting or social that clashed with a home game.

Now this wonderful warm human fellow has left us,



leaving a Chris-shaped space whose emptiness will resonate among us for a long time. Our hearts go out to Karen, his widow, and children Adam and Laura whose loss is of course so much vaster than ours.

And now let's all raise a glass – or several glasses (as Chris would!) – to his memory. We won't often see his like again.

THE SUPERMARKET ARMS?

Beer Moos has heard extremely disturbing reports that a major pubco has been closing pubs then not selling them but letting the sites on long leases to supermarkets to use for convenience stores. So far as we know this hasn't yet happened in our branch area, but it is something we should be aware of and look out for.

The Mitre

Buckingham
"A village pub in the town"

**We serve Silverstone,
Hopping Mad and other
local ales, along with Log fires,
Sky Sports and a
warm welcome**

**Telephone:
01280 813080**

**2 Mitre Street
Buckingham
MK18 1DW**



www.themitre.org.uk

Fastest Blubber on Rubber?



Leader Alan Calls 'Let's go!'

Despite a chilling wind and overcast sky with flurries of snow, 45 hardy souls turned up for this year's Redway Cycle Crawl. Starting with a hearty breakfast at the Prince Albert, the assembled company rode to the Nag's Head at Great Linford, Ship Ashore at Willen, Village to sup in the Swan Inn, recently restored after its disastrous fire. We then popped to the Keys and the Barge at Woolstone, before tackling the uphill slog through Campbell Village where we visited the Barn before riding on to Wetherspoons, our last port of call.

Several friends not into cycling followed us by car or bus as this is an event for everyone. A great time was had by all, and warm thanks are due to all the landowners for their hospitality (often in face of sudden invasion!) and to Alan Sanders for organising it.



To the bikes



Out of the rain at last



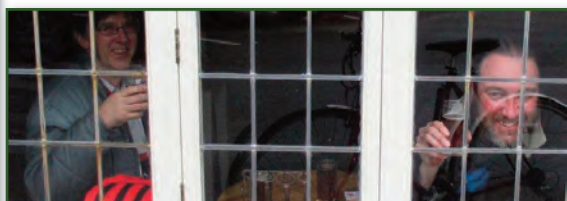
They're off...



Some got on their bikes....



...and off...



...others stayed inside where it's warm and dry!

and up on their bikes for
 t, Bradwell village, the
 then to Milton Keynes
 proceeded to the Cross
 Park to the city centre,
 one. As on all previous
 dlords/ladies for their
 it.



How far to the next one?



This hill's steep



..the next one



Arriving at the Cross Keys



Where have all the riders gone?



along the way



en route



Journey's end!

Traveller's Ales

Beer in Australia and Singapore

One of travelling's many pleasures is the discovery of superb beer in unexpected places. It can be tempered by finding disappointing beer where one might have anticipated better. Such was your editor's experience on a recent holiday to Australia, where good beer does exist but you have to search – and pay – for it, and to Singapore, where the craft beer was mindblowing.

The stereotype of Aussie beer - bland fizz chilled to stomach-cramp-inducing temperatures - has much truth. But look a little closer and the land of the kangaroo has some cracking craft beers, and the number is growing.

As good a place as any to find them would be Fremantle, just outside Perth on the coast of Western Australia, for it is the home of Little Creatures brewery, a large-ish outfit whose delicious beer is available nationwide. The company has a large bar-café built into its Fremantle plant so you can eat and drink and meet your friends with the steelware of a major brewery towering above you. Little Creatures has another brewery at Geelong near Melbourne to service Australia's east coast, and its bottled beers are on sale from specialist outlets in the UK. The company was recently taken over by Kirin of Japan, which may or may not bode well for its future. In mainstream Australian bars it is the beer to look out for.



Fremantle is a delightful and historic small town, exquisitely preserved, and with several craft beer bars most of which are also restaurants. I tried Monks (www.themonk.com.au) and the Sail and Anchor (www.sailandanchor.com.au). Both had

tasty beers but a little too cold and too carbonated for my palate. Still, both were vastly better than the run of Aussie lagers.

Fast forward to Sydney, a thrilling throbbing trendy metropolis, and to Darling



Harbour, its thrillingest throbbingest trendiest heart. Here you'll find the King Street Brewhouse (www.kingstbrewhouse.com.au), with its attractive waterfront forecourt, and, about a kilometre away in the same complex, is the Pumphouse, an immense craft beer bar in a former pumping station (pumphousebar.com.au). Julia Gillard, Australia's Prime Minister, has been known to drink here, and her taste is excellent, for the beer is very good indeed. As well as Australian crafts they sell draught and bottled beers from all over the world, including Thornbridge and Brewdog from the UK.

But – and it is a big but – craft beer in Oz is not cheap. AU\$10 (£6.70) a pint and \$7.50 (£5) for a 33cl schooner would be a good price in Fremantle - more in Sydney. Also the price varies with the time of day so a beer bought at 3 in the afternoon might cost twice as much in the same bar at 10pm. Much to my amazement, all bars in Sydney must close at 10.30pm which seemed odd for such a swinging let-it-all-hang-out city.

In Singapore – always thought of as a regimented uptight place – they are far more laid back. One of that fascinating city-state's many delights – and a very unexpected



one – is the utterly superb craft beer there. The star venue has to be Brewerkz (www.brewerkz.com) in the Riverside complex (Clarke Quay underground) which I love so much I broke both my outward and homeward journeys in Singapore in order to drink there. Though they do sell some guest beers, most are brewed on the premises and very excellent and

varied they are, and – despite 40 degrees heat and 100% humidity outside (everywhere in Singapore is, mercifully, air-conditioned) – served without excessive carbonation and at a proper temperature.



How much do they cost? As in Australia it all depends when you visit. Closing time is midnight (1am at weekends) and the day is divided into no less than five price bands. Thus, between midday opening and 3pm, 50cl – slightly under a pint - of most beers will cost you 7 Singapore dollars (£3.50).

From 3pm to 6pm the price rises to \$10, then to \$13 till 8pm, and between 8pm and 11pm your beer costs a whopping \$16 (£8) dropping after 11pm back to \$13. Also the unit cost is not constant – 30cl of beer will cost you \$6 but 50cl is only one dollar more – in general the bigger the volume the lower the unit price. This, plus the strength and irresistible more-ishness of the beer, makes a night out's budgeting a little fraught but I didn't care, for the beer was so surpassingly good it was all worth it. If you are ever in Singapore and pass this place over then you are not a beer lover for it is almost worth the 14 hour flight just to drink there.

And the moral of this traveller's tale? There are two, I think. The first is that splendid beer can now be found in many places round the globe and not always in the expected ones. And secondly and more controversially, when we moan about beer prices here in Britain, let's remember that in many less lucky lands they have to pay far far more.

Jim Scott

Have you Scored yet?

CAMRA's National Beer Scoring System (NBSS) is an easy 0-5 point scale for judging beer quality, and to find out which pubs consistently sell well-kept ale. So we invite all real ale drinkers, not just CAMRA members, to send us their beer scores for pubs both in our area, and elsewhere in the UK. We forward scores for out-of-area pubs to the relevant branches. These results help us decide which pubs to consider for the Good Beer Guide.

E-mail your scores to us at pubs@mkcamra.org.uk, bring them to any of our meetings or social events, or submit them online at www.beerscoring.org.uk. You'll need to give your name, CAMRA Membership Number (if you're a member), Date of Survey, Pub's Name and Location, Beer Name and Brewery, and of course, your score.

0 Undrinkable	<i>No cask ale available, or so poor you have to take it back or can't finish it.</i>
1 Poor	<i>Beer that is anything from barely drinkable to drinkable with considerable resentment.</i>
2 Average	<i>Competently kept, drinkable pint but doesn't inspire in any way, not worth moving to another pub but you drink the beer without really noticing.</i>
3 Good	<i>Good beer in good form. You may cancel plans to move to the next pub. You want to stay for another pint and may seek out the beer again.</i>
4 Very Good	<i>Excellent beer in excellent condition.</i>
5 Perfect	<i>Probably the best you are ever likely to find. A seasoned drinker will award this score very rarely.</i>



Beer Festival Equipment

*For the Hire of Barrel stillage,
cooling, taps, bars and more!*

Barrel (9gl) - Stillages/ Racking, traditional
wooden - 2 x 9gl, 12 x 9gl Barrels, taps,
chiller saddles, Insulation jackets, Chillers,
Remote, Bar units - two metre long,
flooring and hand pumps

Photos and a very competitive price
list available on the web site -
www.beerfestivalequipment.co.uk

Contact: john@beerfestivalequipment.co.uk
Tel: 07770 938300

Based near Bicester

bell&bear

Freehouse

**4/5 Real Ales on Rotation
inc. Hopping Mad & Locale**
4/5 Real Ciders - 2 from MK
Unpasturised German Pilsners
& Hefeweizen on draught

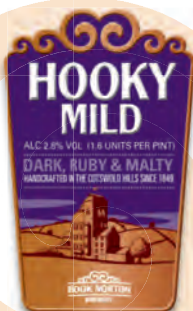
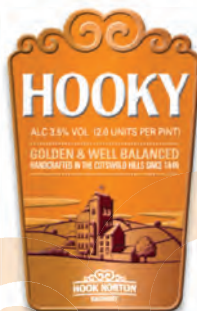
**All 50 wines by the glass
including natural "Real Wines"**
Over 500 different Real Ales
Served in the past 2 years!

Separate A la Carte Restaurant

We give 5% off each pint
with a valid bus ticket home!

www.bellandbear.net
twitter.com/bellandbear
facebook.com/bellandbear

12 High St, Emberton 01234 711565



Handcrafted beers from the Cotswold Hills since 1849

At Hook Norton we don't just produce great tasting beers. Visit our shop, well stocked with beer and great Brewery gifts, come for a Brewery Tour or for one of our unique events. **Tours are just £11.50 per person** (concessions are available) and last two hours including a half hour tutored tasting - definitely not to be missed!

Open Monday to Saturday 9.30am - 4.30pm all year round

The Brewery, Hook Norton, Oxfordshire, OX15 5NY 01608 730384 e: vc@hooky.co.uk

www.hooky.co.uk

HOOK NORTON
BREWERY

HANDCRAFTED IN THE
COTSWOLD HILLS SINCE 1849

Diary Dates

Please note that this diary information is always subject to change – check online for latest information at www.mkcamra.org.uk/diary Items marked with a tankard symbol are official CAMRA events

March 2013

Friday 15th March - Saturday 16th March

Winslow Lions Beer Festival, Winslow Public Hall, MK18 3JA. from 7-11pm and 1-7pm Sat only with Six Nations Rugby on a "Big Screen". Admission £5. This is a Charity Fund Raiser.

For more details visit www.winslowlions.org.uk

Friday 22nd March – Sunday 24th March

6th Real Ale and Cider Tasting Weekend at Wolverton Town Sports Club, Osborne St MK12 5HH tel 01908 313866. (see *Club News* on p5)

Saturday 23rd March

East London Pub Crawl and visits to two breweries. Meet at MK Central Station at 10am for the 10.22 train to Euston. Return from Euston around 19.30.

Monday 25th March

Branch Annual General Meeting (postponed from Jan 28) The Barn, Central Milton Keynes, 8pm.

April 2013

Thursday 11th April – Sunday 14th April

Our annual long weekend in Belgium, stay in Leuven (one night) and Hasselt (two nights). Visit Dolle and Kerkom breweries. £260 (single supp £68).

For further info and to reserve a place e-mail Doug at social@mkcamra.org.uk or phone 01604 862187. Direct private coach from Northampton and MK.

Friday 19th - Sunday 21st April

CAMRA Members' Weekend and AGM, St Andrews and Blackfriars Halls, Norwich, NR3 1AU. All CAMRA members are welcome to attend, but early booking of accommodation is **strongly** advised. Details on www.camra.org.uk/agm

Monday 29th April

Branch Meeting, George, Winslow, 8.15pm

May 2013

Thursday 16th May

Branch Social, Lamb, Stoke Goldington, 8pm.

Tuesday 28th May

Branch Meeting, Cowper's Oak, Weston Underwood, 8.15pm

Looking Ahead

Monday 24th June

Branch Meeting, New Inn, Buckingham, 8.15pm

Tuesday 13th – Saturday 17th August

Great British Beer Festival returns to Olympia, London. Booking begins in April. Details at:

www.gbbf.org.uk

April is Community Pubs Month

Local pubs are at the heart of countless communities across Britain. In April, CAMRA launches Community Pubs Month, part of CAMRA's key campaign to raise the profile of pub-going and increase the number of people using pubs regularly.

Licensees can order packs of free promotional material direct from CAMRA. The packs, available now, include campaigning posters, beer mats, leaflets and pump clip crownners. Pubs appearing in the current Good Beer Guide will receive them automatically. To find out more visit:

www.communitypubsmonth.org.uk



Champion Winter Beer Of Britain 2013

CAMRA's National Winter Ales Festival took place in a snowy Manchester in January – the last time it will be held in that city before relocating to Derby in 2014. As usual, judging for the Champion Winter Beer of Britain took place on the festival's opening day, and here are the results:

Overall Winners

Gold: Elland 1872 Porter

Silver: Bartrams Comrade Bill's E.A.I.S.S.

Bronze: Kelburn Dark Moor

National Category Winners

Old Ales & Strong Milds

Gold: Kelburn Dark Moor

Silver: Jennings Sneek Lifter

Bronze: Purple Moose Dark Side Of The Moose

Stouts

Gold: Bartrams Comrade Bill's E.A.I.S.S.

Silver: Marble Stouter Stout

Bronze: Hop Back Entire Stout

Porters

Gold: Elland 1872 Porter

Silver: Blythe Johnsons

Bronze: Derby Penny's Porter

Barley Wines and Strong Old Ales

Gold: Hogs Back A Over T

Silver: Heart Of Wales High As A Kite

Bronze: Kinver Over The Edge

Tight Shorts

Beer Moos has heard disturbing reports that landlords in managed houses of a major north of England family brewer are being penalised for serving full pints. To leave room for a creamy head, they must fill a brim-measure pint glass with no more than 95% liquid or miss the financial targets enforced on them by the brewery.

Beer Moos has no issue with tight creamy heads on beers formulated to be served in that way or in parts of the country where that is expected. But the obvious solution would be to use oversized lined glasses, not short-change the punter.



A Campaign of Two Halves

Join CAMRA Today

Complete the Direct Debit form opposite and you will receive 15 months membership for the price of 12 and a fantastic discount on your membership subscription.

Alternatively you can send a cheque payable to CAMRA Ltd with your completed form, visit www.camra.org.uk/joinus or call 01727 867201. All forms should be addressed to Membership Department, CAMRA, 230 Hatfield Road, St Albans, AL1 4LW.

Your Details

Title _____ Surname _____ Single Membership £23 ☐ £25 ☐

Forename(s) _____ (UK & EU)

Date of Birth (dd/mm/yyyy) _____ Joint Membership £28 ☐ £30 ☐

Address _____ (Partner at the same address)

Postcode _____

Email address _____

Tel No(s) _____

Partner's Details (If Joint Membership)

Title _____ Surname _____

Forename(s) _____

Date of Birth (dd/mm/yyyy) _____

Direct Debit Non DD

I wish to join the Campaign for Real Ale, and agree to abide by the Memorandum and Articles of Association

I enclose a cheque for _____

Signed _____ Date _____

Applications will be processed within 21 days

Campaigning for Pub Goers & Beer Drinkers

Enjoying Real Ale & Pubs

Join CAMRA today – www.camra.org.uk/joinus



Instruction to your Bank or Building Society to pay by Direct Debit

Please fill in the details below using a call your personal card to
 Campaign for Real Ale Ltd.
 230 Hatfield Road, St Albans, Herts, AL1 4LW

Service User Number **9 2 6 1 2 9**

Name and full postal address of your Bank or Building Society
 To the Manager _____ Bank or Building Society
 Address _____
 Postcode _____

Name(s) of Account Holder _____

Branch Sort Code _____

Bank or Building Society Account Number _____

Reference _____

FOR CAMPAIGN FOR REAL ALE LTD OFFICIAL USE ONLY
 This is not part of the instruction to your Bank or Building Society.

Membership Number _____

Name _____ Forename _____

Instructions to your Bank or Building Society
 Please use Campaign for Real Ale Limited Direct Debit form from the account debited on the instruction subject to the conditions agreed in the Direct Debit Guarantee. Lenders must also fill in the details on the reverse side of the form to provide the bank of the account.

Signature(s) _____ **Date** _____

Bank or Building Society: Your bank should ensure that the account is not closed, and that the account is not used for any other purpose. This Guarantee should be obtained and retained by the payer.

The Direct Debit Guarantee

1. This Guarantee is intended by the account holder to ensure that the account is not closed, and that the account is not used for any other purpose. This Guarantee should be obtained and retained by the payer.

2. If you are not happy with the service, date or frequency of your Direct Debit, you can cancel it at any time. If you do, you will not be liable for any charges or fees. If you do, you will not be liable for any charges or fees. If you do, you will not be liable for any charges or fees.

3. If you are not happy with the service, date or frequency of your Direct Debit, you can cancel it at any time. If you do, you will not be liable for any charges or fees. If you do, you will not be liable for any charges or fees.

4. If you are not happy with the service, date or frequency of your Direct Debit, you can cancel it at any time. If you do, you will not be liable for any charges or fees. If you do, you will not be liable for any charges or fees.

5. If you are not happy with the service, date or frequency of your Direct Debit, you can cancel it at any time. If you do, you will not be liable for any charges or fees. If you do, you will not be liable for any charges or fees.

6. If you are not happy with the service, date or frequency of your Direct Debit, you can cancel it at any time. If you do, you will not be liable for any charges or fees. If you do, you will not be liable for any charges or fees.

7. If you are not happy with the service, date or frequency of your Direct Debit, you can cancel it at any time. If you do, you will not be liable for any charges or fees. If you do, you will not be liable for any charges or fees.

8. If you are not happy with the service, date or frequency of your Direct Debit, you can cancel it at any time. If you do, you will not be liable for any charges or fees. If you do, you will not be liable for any charges or fees.

9. If you are not happy with the service, date or frequency of your Direct Debit, you can cancel it at any time. If you do, you will not be liable for any charges or fees. If you do, you will not be liable for any charges or fees.

10. If you are not happy with the service, date or frequency of your Direct Debit, you can cancel it at any time. If you do, you will not be liable for any charges or fees. If you do, you will not be liable for any charges or fees.

NEW FOR 2013

MOONGAZER 4.3 ABV

A RUBY AUBURN, CITRA &
CHINOOK HOPPED,
EXPLOSION OF FLAVOUR.



TRING

BREWERY Co.

Here at Tring Brewery we select the finest ingredients and craft them into a variety of sumptuous, award winning ales.

In fact we produce over 25 different cask ales every year. A beer to suit all palates?

We'd like to think so.

For 2013 we continue to champion UK hops by using established and newer "experimental" varieties in all our monthly specials.

All these great ales are available at local pubs, clubs and restaurants or from our brewery shop.

For more information visit
www.tringbrewery.co.uk
or call 01442 890721

 @TringBrewery



The Cannon

Free House

Beer Festival

29th March - 1st April

14 Real Ales, 4 Ciders
BBQ, Live Music including Folk,
Jazz and Party Band

We have appeared for the last 17
years running in the CAMRA
Good Beer Guide

Function room available to hire

50 High Street, Newport Pagnell, Bucks
MK16 8AQ Tel: 01908 211495

Leased pub opportunities in your local area



Stag Tavern

35 Brook Street, Stotfold, Hitchin SG5 4LA

Key Attributes

- Newly refurbished village pub with a strong cask ale clientele
 - Nestled in an existing and developing residential area
 - £100,000 investment now completed
- Dining room/function room with 34 covers, a good sized catering kitchen and court yard garden

**Find out more about running one of these pubs
or similar pubs in the area by contacting**

Dan Cashmore on 01283 502 414 or daniel.cashmore@punchtaverns.com

PUNCH TAVERNS IPHONE APP (Powered by Find My Pub)
is now on ITUNES and FREE to download

